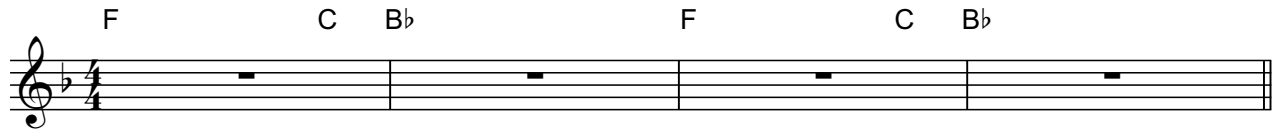


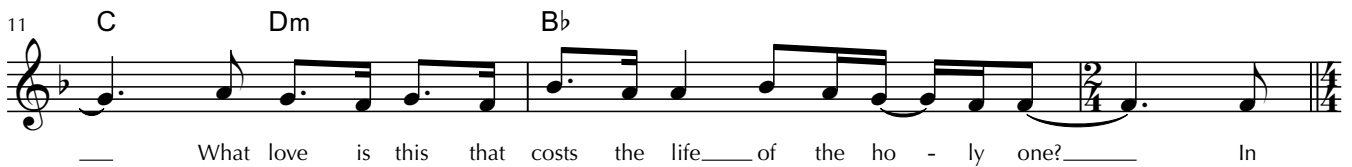
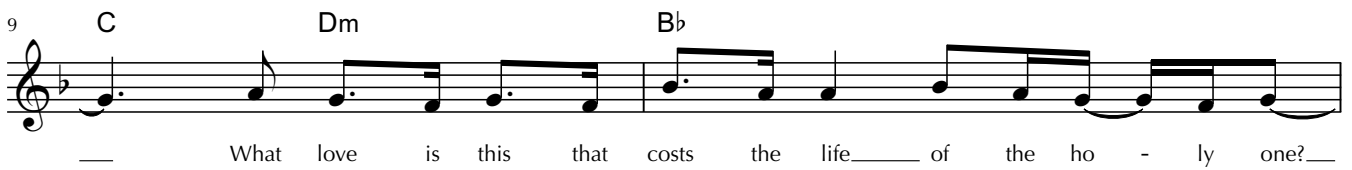
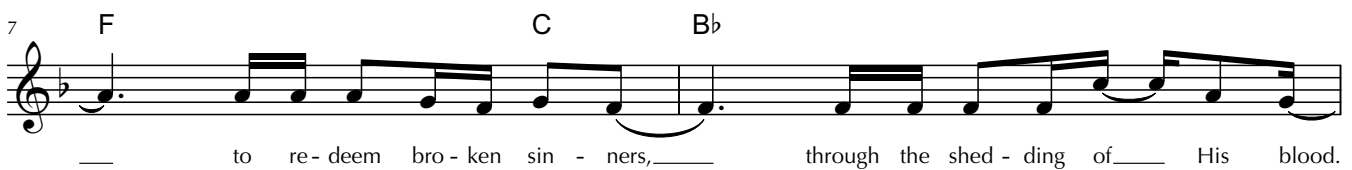
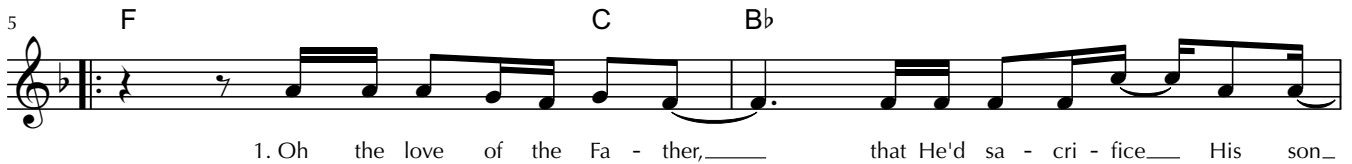
In God's Great Love

Words and Music by
NGAIRE BUCKLEY, JONATHAN BUCKLEY
& JAMES MCDONALD

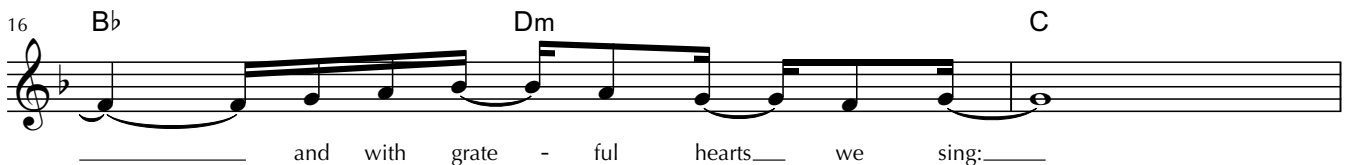
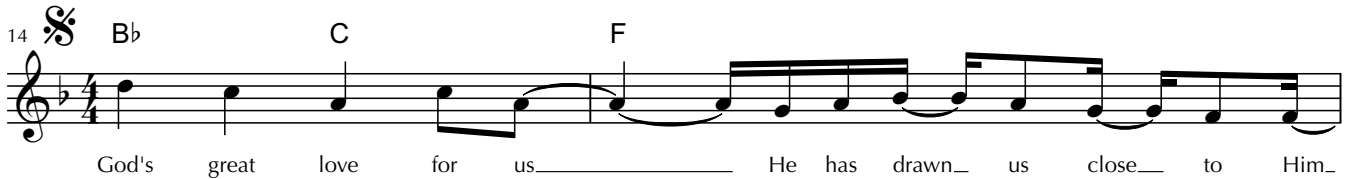
Moderately ♩ = 77



VERSE 1



CHORUS



20 **B \flat** **C** **To Coda** \oplus **F** **C** **B \flat** **F** **C** **B \flat**

glo-ry to our God above.

VERSE 2

25 **F** **C** **B \flat**

2. Grace and mer - cy a - boun - ding, life re - stored yet not de - served.

27 **F** **C** **B \flat**

Love be - yond un - der - stan - ding: cal - ling peo - ple to His church.

29 **C** **Dm** **B \flat**

What love is this that of - fers life that we could ne - ver earn?

31 **C** **Dm** **B \flat** **F** **D.S. al Coda**

What love is this that of - fers life that we could ne - ver earn? In

\oplus **Coda**

34 **Gm** **F/A** **C** **Gm** **F/A** **C**

BRIDGE

38 **Gm** **F/A** **C** **Gm** **F/A** **C**

Un - fail - ing mer - cy, ev - er - las - ting grace.

42 **Gm** **F/A** **C** **Dm** **1.** **C** **2.** **C**

Per - fect for - give - ness, God you are love. God you are love. In

CHORUS

47 **B \flat** **C** **F**

God's great love for us _____ He has drawn us close to Him.

Detailed description: This is the first line of the chorus. It starts with a treble clef and a key signature of one flat (B-flat). The melody begins on a whole note G4, followed by a half note A4, and a quarter note B4. The lyrics 'God's great love for us' are aligned with these notes. The music then continues with a half note G4, a quarter note F4, and a quarter note E4. The lyrics 'He has drawn us close to Him' are aligned with these notes. The staff ends with a double bar line.

49 **B \flat** **Dm** **C**

_____ and with grate - ful hearts we sing: _____

Detailed description: This is the second line of the chorus. It starts with a treble clef and a key signature of one flat. The melody begins with a half note G4, followed by a quarter note A4, and a quarter note B4. The lyrics 'and with grate - ful hearts we sing:' are aligned with these notes. The music then continues with a half note G4, a quarter note F4, and a quarter note E4. The staff ends with a double bar line.

51 **Dm** **C** **F**

Ho - ly is the Lord, _____ we know love for He is love,

Detailed description: This is the third line of the chorus. It starts with a treble clef and a key signature of one flat. The melody begins with a half note G4, followed by a quarter note A4, and a quarter note B4. The lyrics 'Ho - ly is the Lord,' are aligned with these notes. The music then continues with a half note G4, a quarter note F4, and a quarter note E4. The lyrics 'we know love for He is love,' are aligned with these notes. The staff ends with a double bar line.

1. _____

53 **B \flat** **Dm** **C**

_____ glo - ry to our God a - bove. _____

Detailed description: This is the fourth line of the chorus. It starts with a treble clef and a key signature of one flat. The melody begins with a half note G4, followed by a quarter note A4, and a quarter note B4. The lyrics 'glo - ry to our God a - bove.' are aligned with these notes. The music then continues with a half note G4, a quarter note F4, and a quarter note E4. The staff ends with a double bar line.

2. _____

B \flat **C** **F** **C** **B \flat** **F** **C** **B \flat**

glo-ry to our God a - bove. _____

Detailed description: This is the fifth line of the chorus. It starts with a treble clef and a key signature of one flat. The melody begins with a half note G4, followed by a quarter note A4, and a quarter note B4. The lyrics 'glo-ry to our God a - bove.' are aligned with these notes. The music then continues with a half note G4, a quarter note F4, and a quarter note E4. The staff ends with a double bar line.